



Good News Bulletin- Edition 32—February 2024

Welcome to the Land, Planning and Development Federation Good News Bulletin.

Published on a monthly basis the Federation wishes to recognise and celebrate the good work achieved by our members.

Wrenman Strategic Land advances growth with major development milestone



WRENMAN
STRATEGIC LAND

Wrenman Strategic Land Ltd is delighted to share news of a strategically located parcel of land off Powderhouse Lane in Lancaster. This exciting development marks a significant milestone in the company's strategic vision for sustainable and thoughtfully planned urban development.

The land will serve as the canvas for a major development project, with Wrenman Strategic Land submitting an outline planning application with Environmental Statement for the construction of up to 200 dwellings. This project will not only contribute to meeting the increasing demand for quality housing in the district but will also include affordable housing, a landscape led design approach and improvements to current highways and drainage infrastructure.

"This marks a major step forward for Wrenman Strategic Land Ltd," commented Warren Cadman, Managing Director. *"We believe this project will not only meet the growing demand for housing in the area but also contribute positively to the overall community and environment".*

The forthcoming development will emphasise careful urban planning, green spaces, and high-quality architectural design to ensure a harmonious integration with the existing landscape and community.

Wrenman Strategic Land Ltd remains dedicated to engaging with stakeholders, local authorities, and the community throughout the planning process.



Wrenman Strategic Land worked closely with several partners on the application including Curtins, PGLA, E3P and Borders Archaeology with Stantec leading on Urban Design, Planning and ES Co-ordination.

Land First Investments Ltd, alongside Promotion Partner Rubix Estates, are delighted to announce that we have entered into a Planning & Promotion Agreement with the Greenwich Hospital Estate for a 18-acre site in Holbrook.



The 18-acre site is off Hyams Lane and is walking distance from the local primary school, shops and services, making it a logical extension to the village of Holbrook.

Raoul Ragoowansi of Land First Investments Ltd said: “We are excited to be working with Rubix Estates on the Promotion of this site. We believe that given the site’s strategic location, it represents a great opportunity to provide deeply required housing for the village of Holbrook. We look forward to promoting this site through the local plan process and obtaining a planning permission and selling on to a developer at the earliest.”

Many thanks to Guy Jenkinson of Strutt & Parker as well as Winckworth Sherwood LLP& Excello Law for helping us get this deal over the line.

Gleeson Land Announces Formation of Three Operating Regions

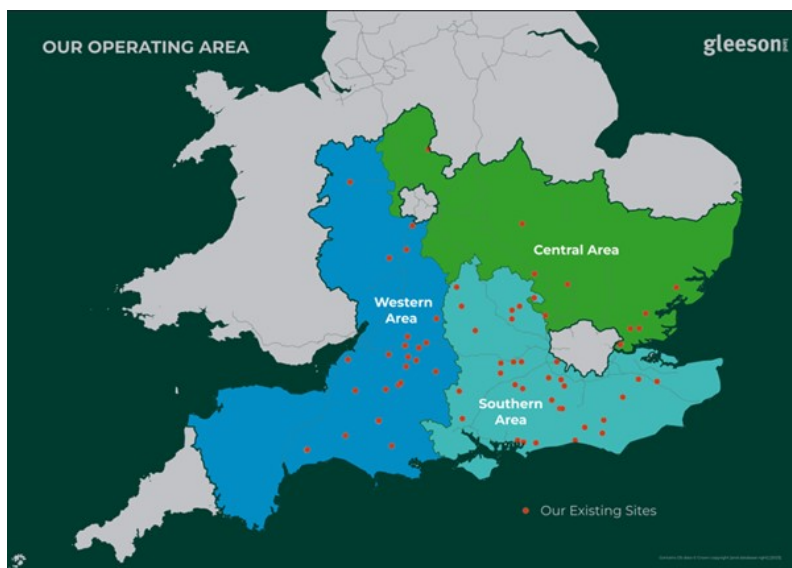
In line with its growth strategy, Gleeson Land is delighted to announce the formation of three operating regions, focusing its teams and operations as it continues to drive growth. As part of this, the Company is delighted to welcome two new key appointments to the Gleeson Land team, as Tom Harris joins as Land Director for the Western Area, while Matthew Bean will head up the Central Area as Senior Land Manager. Having joined the team 18 months ago, Katherine Titley remains in the role of Land Director, leading the Southern Area.

Katherine, Tom, and Matt will each spearhead Gleeson Land’s growth in their designated region, leading on identifying and securing land opportunities as the Company continues to implement its ambitious growth strategy.

Guy Gusterson, Managing Director of Gleeson Land, comments: *“I am delighted to welcome Tom and Matthew to the Gleeson Land team, both being great assets to the business and critical to executing our growth strategy. We have a strong track record and portfolio in the West and ambitious growth plans for the region, which Tom will spearhead. Matthew will enhance our presence in the Central Area, which will play a significant role in meeting future housing demand in England.*

Both Tom and Matthew will be supported by our market-leading Planning, Technical, and Research & Analytics teams, and I am confident that having a physical presence in these areas will help us to provide the best possible service to our existing and future customers. I wish them both the best in their new roles.

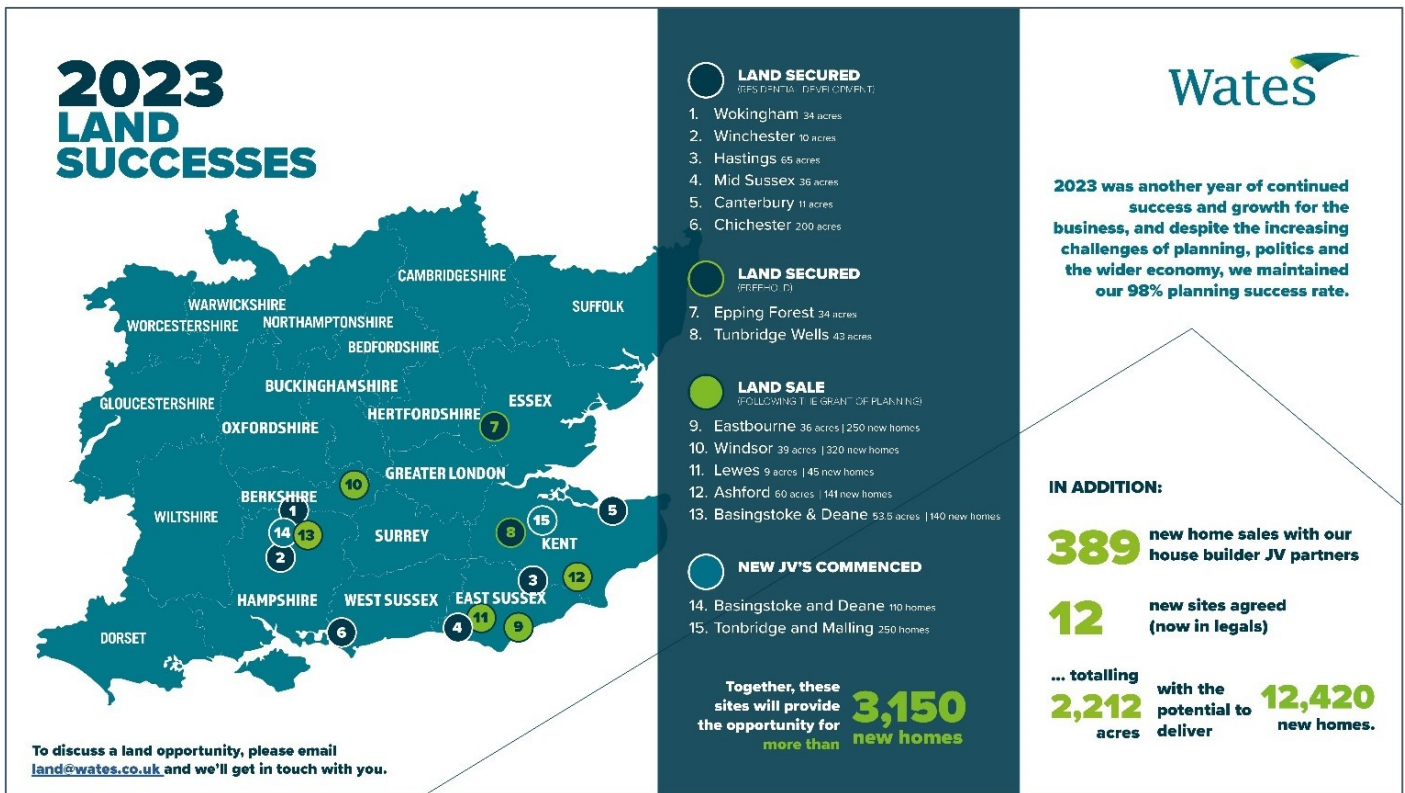
I am also pleased that Katherine will continue to head up our Southern Area. With a proven track record, I look forward to the business continuing to reap the rewards of Katherine’s strong relationships and expertise, having hit the ground running since joining 18 months ago.”



2023 Land Successes



2023 was another year of continued success and growth for Wates Developments. Despite the increasing challenges of planning, politics and the wider economy, the business created the opportunity for **more than 3,150 new homes** and maintained its' **98% planning success rate**.



Nick Laugharne joins Wates Developments senior leadership team as 'Operations Director - Land and Development'.

Wates Developments has announced the appointment of **Nick Laugharne** to its' senior leadership team, in a new role for the business: 'Operations Director – Land and Development'.

Nick has worked for more than 18 years within the property and built environment sector, primarily with Vistry, where he worked for the last 15 years. During his time with Vistry, Nick held various senior roles, most recently as an MD within their Partnerships division.

David Brocklebank, Executive MD, Wates Developments, said: "We're delighted that Nick has agreed to add his skills to our existing senior leadership team in a role we have created in response to the pace of our growth, our wide range of land-related ventures and our ambition for further success. Nick brings huge levels of experience in both greenfield and brownfield land, along with a detailed knowledge of both volume housebuilding and partnership development."



4 More Planning Permissions!

Permission Granted for 100 Homes in Creech St Michael

Gladman are pleased to announce that following Public Inquiry held in January, our appeal against the refusal of planning permission for up to 100 dwellings at Land at North End, Creech St Michael, has been allowed.

The scheme will provide 25% affordable housing, a net gain in biodiversity, children's play area and footpath to enable easy access walking routes to the centre of Creech.

Many thanks to everyone involved. Congratulations to our landowners.



Permission Granted for 150 Homes in Birdham

Gladman are pleased to announce that following a public inquiry held in September 2023, our appeal for up to 150 dwellings at Land off Main Road, Birdham has been allowed. The site will provide 30% affordable housing (including 25% First Homes) and a community park.

Many thanks to everyone who has worked on this project. Congratulations to our landowners.

Permission Granted for 95 Homes in Brayton

Gladman are pleased to announce that following Public Inquiry held in January, our appeal against the refusal of planning permission for up to 95 dwellings at Land off Barff Lane, Brayton, has been allowed.

The scheme will provide 40% affordable housing, a net gain in biodiversity, and has opened up extensive publicly accessible walking routes to the west of Brayton.

Many thanks to everyone involved. Congratulations to our landowners.



Permission Granted for 40 Homes in East Langdon

Gladman are pleased to confirm our outline application for up to 40 dwellings at Land off the Street, East Langdon, received a resolution to grant planning permission at Dover District Council's Planning Committee last week.

The site is a draft allocation within the emerging Dover District Local Plan, and will provide 30% affordable housing. Gladman have worked closely with TaylorHare Architects in the design of the proposal. Whilst in outline, the scheme provides a framework for a high quality form of development which responds sensitively to the local character of East Langdon. Many thanks to everyone involved. Congratulations to our landowners.